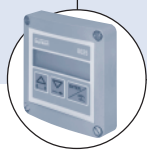


Type 8031 can be combined with...



Type 8025

Transmitter-
wall or panel



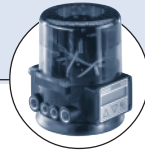
Type 8025

Batch controller-
wall or panel



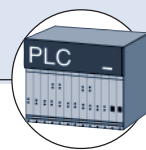
Type 8623-2

PI Controller



Type 8630

TopControl



PLC

Flow Sensor for continuous low-flow measurement and batch control

- Cost attractive solution for low flow rates and solids-free liquids
- Wetted parts made of Halar, Saphir, COREPOINT™, Viton (FPM) or EPDM for use in aggressive liquids
- 3-wire system with paddle-wheel and Hall sensor up to 55°C, 10 bar
- Frequency output proportional to the flow rate, PLC-compatible

The compact low-flow sensor type 8031 with paddle-wheel and hall sensor is specially designed for use in aggressive and solid-free liquids.

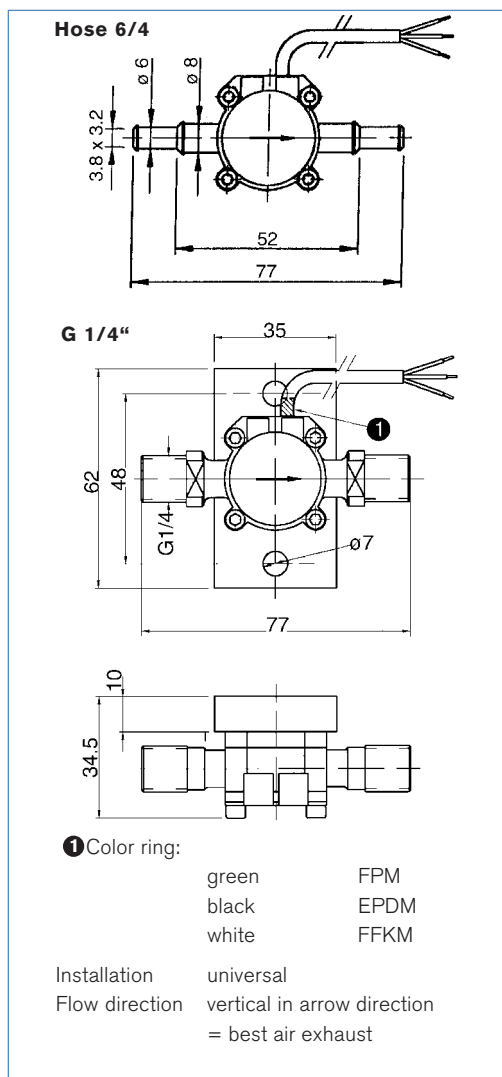
The particular cost attractive measuring principle is based on a local flow velocity measurement. The sensor produces a flow proportional frequency signal which can easily be transmitted and processed.

We recommend here particularly the connection to the Burkert low-flow transmitter type 8025 (see separate data sheet).

Technical data

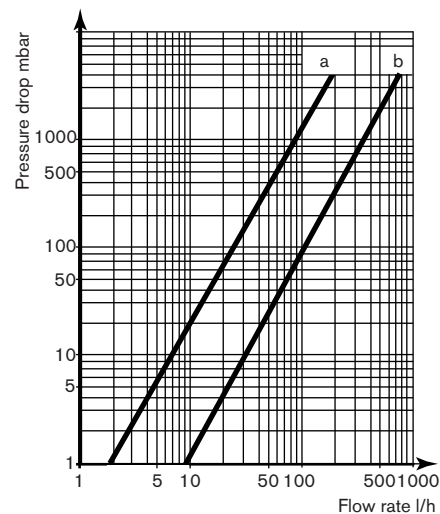
Measuring range	10 to 100 l/h (2,6 to 27 gph) 20 to 250 l/h (5,3 to 66 gph)
Accuracy	±2% of reading
Repeatability	<1%
Ambient temperature	-10 to 55°C (14 to 131°F)
Storage temperature	-10 to 70°C (14 to 158°F)
Fluid temperature	-10 to 55°C (14 to 131°F)
Fluid pressure	10 bar at 20°C (145 PSI at 68°F)
Viscosity of fluids	1 to 10 cst.
Materials	Housing: ECTFE (Halar) or POM Paddle-wheel: ECTFE (Halar) or POM Axis: Saphir or COREPOINT™ Bearings: Rubin or POM Magnets: ECTFE (Halar) encapsuled or blank Gasket: FPM (Viton), EPDM or FFKM (Kalrez).
K-factor	10200 pulse/liter (range 10 to 100 l/h) 3400 pulse/liter (range 20 to 250 l/h)
Output signal	Open collector NPN Pull-up resistance of 2,2 kΩ Standard feature between +VDC (white wire) and signal (green wire)
Frequency	0 to 300 Hz
Voltage supply	12...24 VDC
Current consumption	max. 15 mA at 24V
Enclosure	IP67

Dimensions

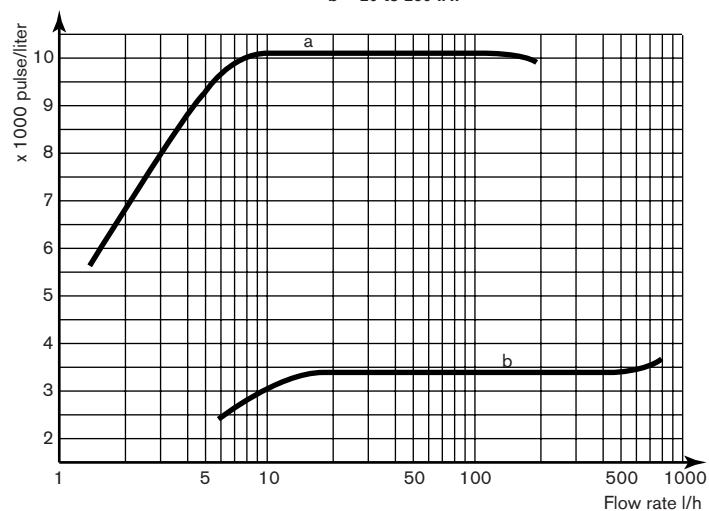


Pressure drop and K-factor curve

Pressure drop



K-factor curve K



Ordering chart Low-Flow Sensor Type 8031

Measuring range	Process connection	Paddle-wheel / Axis	Gasket	Item no.
10 to 100 l/h	Hose 6/4	POM/Corepoint	FPM	783 717
	G1/4"	POM/Corepoint	FPM	783 719
20 to 250 l/h	Hose 6/4	POM/Corepoint	FPM	783 718
	G1/4"	POM/Corepoint	FPM	783 720
10 to 100 l/h	G1/4"	ECTFE/Saphir	FPM(Viton)	783 721
	G1/4"	ECTFE/Saphir	EPDM	783 722
	G1/4"	ECTFE/Saphir	FFKM	783 723
	G1/4"	ECTFE/Saphir	FPM(Viton)	783 724
20 to 250 l/h	G1/4"	ECTFE/Saphir	EPDM	783 725
	G1/4"	ECTFE/Saphir	FFKM	783 726
	G1/4"	ECTFE/Corepoint	FPM(Viton)	437 982
	G1/4"	ECTFE/Corepoint	EPDM	438 531
10 to 100 l/h	G1/4"	ECTFE/Corepoint	FPM(Viton)	438 532
	G1/4"	ECTFE/Corepoint	EPDM	437 524

In case of special application conditions,
please consult for advice.

We reserve the right to make technical changes
without notice.

01_2004_A_00891780